

SMD Unshielded Power Inductors

◎ Product introduction 產品介紹

- Excellent solderability and heat resistance for either flow or reflow soldering

良好的可焊性和耐焊性

- DC low resistance, small, may correspond to current use

直流電阻較低，小型，可對應大電流用途

- Magnetically shielded construction

磁屏蔽結構

- For RoHS instructions corresponding products

為RoHS指令對應產品



◎ Product application 產品應用

- Ideally used in Digital camera, notebook PC, LCD TV set, DC-DC Converters, etc

用於數碼相機，筆記本電腦，LCD電視等

◎ Product Identification 產品標識

VES 333015 470 M T

VES-----Series name 系列名稱

333015-----Dimension 產品尺寸

470-----Inductance 電感值【470 = 47 μ H】

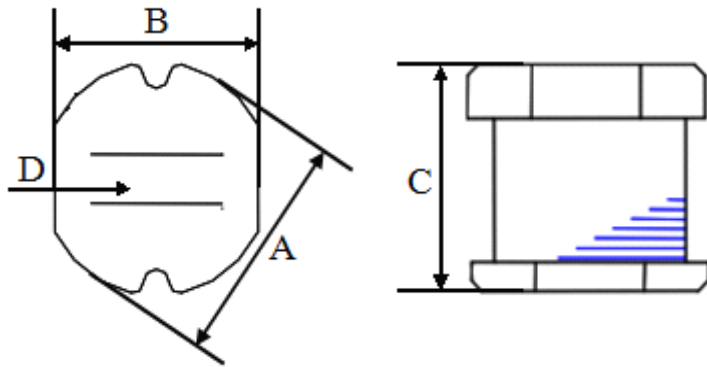
M-----Tolerance 公差【J=5%, K=10%, M= 20% ,T= 30% 】

T-----Taping 編帶盤裝

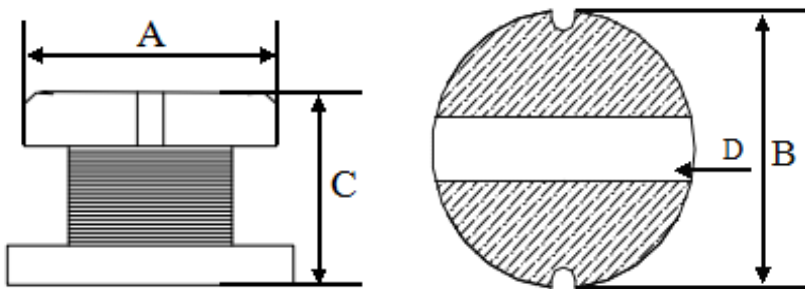
SMD Unshielded Power Inductors

◎Shape&Dimensions 形狀與尺寸:

333015--109065L



131370L



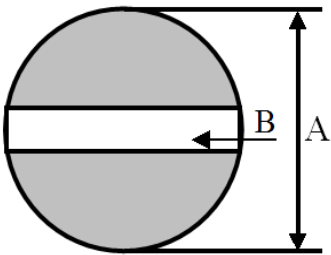
SIZE CODE (inch)	A	B	C	D	CHIPS REEL
333015	3.30±0.30	3.00±0.30	1.50±0.30	1.0 typ.	3K
333021	3.30±0.30	3.00±0.30	2.10±0.30	1.0 typ.	3K
454032	4.50±0.30	4.00±0.23	3.20±0.30	1.2	2K
585225	5.80±0.30	5.20±0.20	2.50±0.30	2.0 typ.	2K
585230	5.80±0.30	5.20±0.20	3.00±0.30	2.0 typ.	2K
585245	5.80±0.30	5.20±0.20	4.50±0.40	1.3	1.5K
787035	7.80±0.30	7.00±0.20	3.50±0.30	2.1	1K
787050	7.80±0.30	7.00±0.20	5.00±0.30	2.1	0.7K
109040L	10.00±0.30	9.00±0.30	4.00±0.50	2.1	0.7K
109054L	10.00±0.40	9.00±0.40	5.40±0.40	2.1	0.7K
109065L	10.00±0.40	9.00±0.40	6.50±0.40	2.1	0.5K
131370L	13.00±0.50	13.00±0.50	7.00±0.30	5 Typ.	0.5K

SMD Unshielded Power Inductors

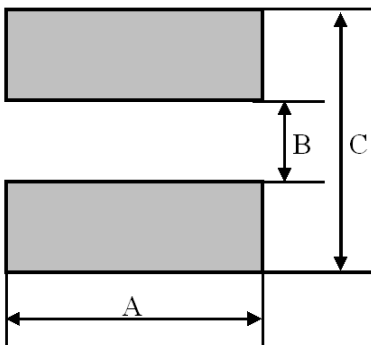
◎Recommender Land Pattern 推薦焊盤布局：

UNIT: mm

333015--109065L



131370L



SIZE CODE (inch)	A	B	C
333015	4.5	1	
333021	4.5	1	
454032	5.5	1.2	
585225	6.8	2	
585230	6.8	2	
585245	6.8	1.3	
787035	8.8	2.1	
787050	8.8	2.1	
109040L	11	2.1	
109054L	11	2.1	
109065L	11	2.1	
131370L	14	4.5	14

SMD Unshielded Power Inductors

◎ Detailed specifications and parameters are introduced

詳細規格及參數介紹

ORDERING CORE	Inductance (μ H)	Tolerance (\pm %)	Test Frequency	RDC (MAX) (Ω)	Isat (A)
VES-333015-2R2	2.2	M	1MHz/1V	0.100	0.79
VES-333015-3R3	3.3	M	1MHz/1V	0.110	0.73
VES-333015-4R7	4.7	M	1MHz/1V	0.150	0.65
VES-333015-5R6	5.6	M	1MHz/1V	0.150	0.6
VES-333015-6R8	6.8	M	1MHz/1V	0.200	0.77
VES-333015-100	10	M	1MHz/1V	0.300	0.45
VES-333015-150	15	M	1MHz/1V	0.580	0.3
VES-333015-220	22	K/M	1MHz/1V	0.710	0.25
VES-333015-330	33	M	1MHz/1V	1.100	0.2
VES-333015-390	39	M	1MHz/1V	1.300	0.17
VES-333015-470	47	M	1MHz/1V	1.300	0.17
VES-333015-680	68	M	1MHz/1V	2.200	0.13
VES-333015-101	100	M	1MHz/1V	3.500	0.1
VES-333015-221	220	M	1MHz/1V	10.920	0.07
VES-333015-122	1200	M	1MHz/1V	38.000	0.05
VES-333015-152	1500	M	1MHz/1V	55.000	0.03

SMD Unshielded Power Inductors

© Detailed specifications and parameters are introduced

詳細規格及參數介紹

ORDERING CORE	Inductance (μ H)	Tolerance (\pm %)	Test Frequency	RDC (MAX) (Ω)	Isat (A)
VES-333021-R82	0.82	T	7.96MHz/1V	0.060	2.2
VES-333021-1R0	1	M	7.96MHz/1V	0.070	2.08
VES-333021-1R4	1.4	M	7.96MHz/1V	0.090	1.86
VES-333021-1R5	1.5	M	7.96MHz/1V	0.110	1.8
VES-333021-1R8	1.8	M	7.96MHz/1V	0.110	1.8
VES-333021-2R2	2.2	M	7.96MHz/1V	0.130	1.39
VES-333021-2R7	2.7	M	7.96MHz/1V	0.140	1.32
VES-333021-3R3	3.3	M	7.96MHz/1V	0.170	1.25
VES-333021-3R9	3.9	M	7.96MHz/1V	0.190	1.2
VES-333021-4R7	4.7	M	7.96MHz/1V	0.210	1.13
VES-333021-5R6	5.6	M	7.96MHz/1V	0.220	0.91
VES-333021-6R8	6.8	M	7.96MHz/1V	0.250	0.85
VES-333021-7R0	7	M	7.96MHz/1V	0.280	0.82
VES-333021-8R2	8.2	M	7.96MHz/1V	0.280	0.82
VES-333021-100	10	K/M	2.52NHZ/1V	0.320	0.74
VES-333021-120	12	M	2.52NHZ/1V	0.350	0.64
VES-333021-150	15	M	2.52NHZ/1V	0.400	0.6
VES-333021-180	18	M	2.52NHZ/1V	0.480	0.54
VES-333021-220	22	K/M	2.52NHZ/1V	0.580	0.5
VES-333021-270	27	M	2.52NHZ/1V	0.650	0.43
VES-333021-330	33	M	2.52NHZ/1V	0.800	0.4
VES-333021-390	39	M	2.52NHZ/1V	0.900	0.37
VES-333021-470	47	M	2.52NHZ/1V	1.190	0.36
VES-333021-500	50	M	2.52NHZ/1V	1.220	0.33
VES-333021-560	56	M	2.52NHZ/1V	1.270	0.31
VES-333021-680	68	K/M	2.52NHZ/1V	1.730	0.3
VES-333021-750	75	M	2.52NHZ/1V	1.900	0.29
VES-333021-820	82	K/M	2.52NHZ/1V	1.990	0.28
VES-333021-101	100	M	1KHz/1V	2.520	0.25
VES-333021-121	120	K/M	1KHz/1V	2.900	0.2
VES-333021-151	150	M	1KHz/1V	3.360	0.19

SMD Unshielded Power Inductors

◎ Detailed specifications and parameters are introduced

詳細規格及參數介紹

ORDERING CORE	Inductance (μ H)	Tolerance (\pm %)	Test Frequency	RDC (MAX) (Ω)	Isat (A)
VES-333021-181	180	M	1KHz/1V	5.100	0.17
VES-333021-221	220	K/M	1KHz/1V	5.800	0.16
VES-333021-271	270	K/M	1KHz/1V	7.800	0.14
VES-333021-301	300	M	1KHz/1V	8.100	0.135
VES-333021-331	330	M	1KHz/1V	9.240	0.13
VES-333021-391	390	M	1KHz/1V	10.140	0.12
VES-333021-461	460	M	1KHz/1V	11.150	0.09
VES-333021-471	470	K/M	1KHz/1V	11.480	0.084
VES-333021-561	560	M	1KHz/1V	19.490	0.08
VES-333021-681	680	M	1KHz/1V	22.000	0.08
VES-333021-821	820	M	1KHz/1V	23.980	0.07
VES-333021-102	1000	M	1KHz/1V	28.800	0.85

SMD Unshielded Power Inductors

© Detailed specifications and parameters are introduced

詳細規格及參數介紹

ORDERING CORE	Inductance (μ H)	Tolerance ($\pm\%$)	Test Frequency	RDC (MAX) (Ω)	Isat (A)
VES-454032-R15	0.15	T	7.96MHz/1V	0.0085	7.50
VES-454032-1R0	1	K/M	7.96MHz/1V	0.0330	3.80
VES-454032-1R2	1.2	M	7.96MHz/1V	0.0350	3.50
VES-454032-1R4	1.4	M	7.96MHz/1V	0.0380	3.30
VES-454032-1R8	1.8	M	7.96MHz/1V	0.0420	2.91
VES-454032-2R2	2.2	K/M	7.96MHz/1V	0.0470	2.60
VES-454032-2R7	2.7	M	7.96MHz/1V	0.0520	2.43
VES-454032-3R3	3.3	K/M	7.96MHz/1V	0.0580	2.15
VES-454032-3R9	3.9	M	7.96MHz/1V	0.0760	1.98
VES-454032-4R7	4.7	K/M	7.96MHz/1V	0.0940	1.70
VES-454032-5R6	5.6	K/M	7.96MHz/1V	0.1010	1.60
VES-454032-6R2	6.2	M	7.96MHz/1V	0.1100	1.50
VES-454032-6R8	6.8	K/M	7.96MHz/1V	0.1170	1.41
VES-454032-8R2	8.2	K/M	7.96MHz/1V	0.1320	1.26
VES-454032-100	10	K/M	2.52MHz/1V	0.1820	1.15
VES-454032-120	12	M	2.52MHz/1V	0.2100	1.05
VES-454032-150	15	K/M	2.52MHz/1V	0.2350	0.92
VES-454032-180	18	M	2.52MHz/1V	0.3380	0.84
VES-454032-220	22	K/M	2.52MHz/1V	0.3780	0.76
VES-454032-270	27	M	2.52MHz/1V	0.5220	0.71
VES-454032-330	33	K/M	2.52MHz/1V	0.5400	0.64
VES-454032-390	39	K/M	2.52MHz/1V	0.5870	0.59
VES-454032-470	47	K/M	2.52MHz/1V	0.8440	0.54
VES-454032-560	56	K/M	2.52MHz/1V	0.9370	0.50
VES-454032-680	68	K/M	2.52MHz/1V	1.1170	0.46
VES-454032-101	100	K/M	1KHz/1V	1.8000	0.40
VES-454032-121	120	K/M	1KHz/1V	2.0000	0.38
VES-454032-151	150	K/M	1KHz/1V	2.8000	0.30
VES-454032-181	180	K/M	1KHz/1V	3.2000	0.25
VES-454032-221	220	K/M	1KHz/1V	4.0000	0.15
VES-454032-331	330	K/M	1KHz/1V	5.8500	0.21

SMD Unshielded Power Inductors

© Detailed specifications and parameters are introduced

詳細規格及參數介紹

ORDERING CORE	Inductance (μH)	Tolerance ($\pm\%$)	Test Frequency	RDC (MAX) (Ω)	Isat (A)
VES-585225-1R0	1	M	7.96MHz/1V	0.030	4.5
VES-585225-1R4	1.4	M	7.96MHz/1V	0.040	4
VES-585225-1R8	1.8	M	7.96MHz/1V	0.050	3.3
VES-585225-2R2	2.2	M	7.96MHz/1V	0.060	2.94
VES-585225-2R7	2.7	M	7.96MHz/1V	0.070	2.5
VES-585225-3R3	3.3	M	7.96MHz/1V	0.080	2.35
VES-585225-3R9	3.9	M	7.96MHz/1V	0.090	2.2
VES-585225-4R7	4.7	K/M	7.96MHz/1V	0.140	2
VES-585225-5R6	5.6	M	7.96MHz/1V	0.150	1.8
VES-585225-6R8	6.8	M	7.96MHz/1V	0.160	1.7
VES-585225-8R2	8.2	M	7.96MHz/1V	0.170	1.4
VES-585225-100	10	K/M	2.52MHz/1V	0.180	1.2
VES-585225-120	12	M	2.52MHz/1V	0.200	1.18
VES-585225-150	15	M	2.52MHz/1V	0.220	1.15
VES-585225-180	18	M	2.52MHz/1V	0.250	1.1
VES-585225-220	22	K/M	2.52MHz/1V	0.350	1
VES-585225-270	27	M	2.52MHz/1V	0.450	0.86
VES-585225-330	33	K/M	2.52MHz/1V	0.560	0.76
VES-585225-390	39	K/M	2.52MHz/1V	0.690	0.75
VES-585225-470	47	K/M	2.52MHz/1V	0.720	0.73
VES-585225-560	56	K/M	2.52MHz/1V	0.840	0.56
VES-585225-680	68	K/M	2.52MHz/1V	0.900	0.52
VES-585225-820	82	K/M	2.52MHz/1V	1.200	0.5
VES-585225-101	100	K/M	1KHz/1V	1.300	0.4
VES-585225-121	120	K/M	1KHz/1V	1.380	0.36
VES-585225-151	150	K/M	1KHz/1V	1.810	0.3
VES-585225-181	180	K/M	1KHz/1V	1.950	0.26
VES-585225-221	220	K/M	1KHz/1V	3.000	0.25
VES-585225-271	270	K/M	1KHz/1V	3.200	0.21
VES-585225-331	330	K/M	1KHz/1V	3.820	0.18
VES-585225-391	390	K/M	1KHz/1V	4.680	0.16

SMD Unshielded Power Inductors

© Detailed specifications and parameters are introduced

詳細規格及參數介紹

ORDERING CORE	Inductance (μ H)	Tolerance (\pm %)	Test Frequency	RDC (MAX) (Ω)	Isat (A)
VES-585225-471	470	K/M	1KHz/1V	5.100	0.15
VES-585225-561	560	K/M	1KHz/1V	8.500	0.14
VES-585225-681	680	K/M	1KHz/1V	10.000	0.13
VES-585225-821	820	K/M	1KHz/1V	12.000	0.07
VES-585225-102	1000	K/M	1KHz/1V	18.000	0.05

SMD Unshielded Power Inductors

© Detailed specifications and parameters are introduced

詳細規格及參數介紹

ORDERING CORE	Inductance (μ H)	Tolerance (\pm %)	Test Frequency	RDC (MAX) (Ω)	Isat (A)
VES-585230-1R0	1	M	7.96MHz/1V	0.030	4.50
VES-585230-1R2	1.2	M	7.96MHz/1V	0.030	4.20
VES-585230-1R5	1.5	M	7.96MHz/1V	0.030	4.10
VES-585230-1R8	1.8	K/M	7.96MHz/1V	0.030	3.70
VES-585230-2R0	2	M	7.96MHz/1V	0.030	3.60
VES-585230-2R2	2.2	M	7.96MHz/1V	0.030	3.50
VES-585230-2R7	2.7	M	7.96MHz/1V	0.040	3.20
VES-585230-3R3	3.3	K/M	7.96MHz/1V	0.050	2.80
VES-585230-3R9	3.9	M	7.96MHz/1V	0.060	2.60
VES-585230-4R7	4.7	K/M	7.96MHz/1V	0.070	2.50
VES-585230-5R6	5.6	M	7.96MHz/1V	0.080	2.40
VES-585230-6R8	6.8	M	7.96MHz/1V	0.090	2.20
VES-585230-8R2	8.2	M	7.96MHz/1V	0.100	2.00
VES-585230-100	10	K/M	2.52MHz/1V	0.120	1.80
VES-585230-120	12	M	2.52MHz/1V	0.130	1.75
VES-585230-150	15	K/M	2.52MHz/1V	0.150	1.70
VES-585230-180	18	K/M	2.52MHz/1V	0.220	1.60
VES-585230-220	22	K/M	2.52MHz/1V	0.220	1.50
VES-585230-270	27	M	2.52MHz/1V	0.260	1.40
VES-585230-330	33	K/M	2.52MHz/1V	0.330	1.10
VES-585230-390	39	K/M	2.52MHz/1V	0.420	1.00
VES-585230-470	47	K/M	2.52MHz/1V	0.500	0.90
VES-585230-560	56	K/M	2.52MHz/1V	0.550	0.85
VES-585230-680	68	K/M	2.52MHz/1V	0.650	0.80
VES-585230-820	82	K/M	2.52MHz/1V	0.800	0.65
VES-585230-101	100	K/M	1KHz/1V	0.900	0.60
VES-585230-121	120	K/M	1KHz/1V	1.000	0.58
VES-585230-151	150	K/M	1KHz/1V	1.300	0.43
VES-585230-181	180	K/M	1KHz/1V	1.500	0.41
VES-585230-221	220	K/M	1KHz/1V	2.000	0.38
VES-585230-271	270	K/M	1KHz/1V	2.500	0.35

SMD Unshielded Power Inductors

© Detailed specifications and parameters are introduced

詳細規格及參數介紹

ORDERING CORE	Inductance (μH)	Tolerance ($\pm\%$)	Test Frequency	RDC (MAX) (Ω)	Isat (A)
VES-585230-331	330	K/M	1KHz/1V	3.200	0.28
VES-585230-391	390	K/M	1KHz/1V	3.500	0.26
VES-585230-471	470	K/M	1KHz/1V	4.200	0.2
VES-585230-561	560	K/M	1KHz/1V	4.500	0.19
VES-585230-681	680	K/M	1KHz/1V	6.500	0.18
VES-585230-821	820	K/M	1KHz/1V	7.500	0.15
VES-585230-102	1000	K/M	1KHz/1V	8.000	0.13

SMD Unshielded Power Inductors

© Detailed specifications and parameters are introduced

詳細規格及參數介紹

ORDERING CORE	Inductance (μ H)	Tolerance (\pm %)	Test Frequency	RDC (MAX) (Ω)	Isat (A)
VES-585245-1R8	1.8	M	7.96MHz/1V	0.0200	3.50
VES-585245-2R2	2.2	M	7.96MHz/1V	0.0230	3.20
VES-585245-3R3	3.3	K/M	7.96MHz/1V	0.0314	2.59
VES-585245-3R5	3.5	M	7.96MHz/1V	0.0300	2.40
VES-585245-4R7	4.7	K/M	7.96MHz/1V	0.0372	2.30
VES-585245-6R8	6.8	M	7.96MHz/1V	0.0570	1.80
VES-585245-8R2	8.2	M	7.96MHz/1V	0.0594	1.70
VES-585245-100	10	K/M	2.52MHz/1V	0.1000	1.44
VES-585245-120	12	M	2.52MHz/1V	0.1200	1.40
VES-585245-150	15	K/M	2.52MHz/1V	0.1400	1.30
VES-585245-180	18	M	2.52MHz/1V	0.1500	1.23
VES-585245-220	22	M	2.52MHz/1V	0.1800	1.11
VES-585245-270	27	M	2.52MHz/1V	0.2000	0.97
VES-585245-330	33	K/M	2.52MHz/1V	0.2300	0.88
VES-585245-390	39	K/M	2.52MHz/1V	0.3200	0.80
VES-585245-470	47	K/M	2.52MHz/1V	0.3700	0.72
VES-585245-560	56	K/M	2.52MHz/1V	0.4200	0.68
VES-585245-680	68	K/M	2.52MHz/1V	0.4600	0.61
VES-585245-820	82	K/M	2.52MHz/1V	0.6000	0.58
VES-585245-101	100	K/M	1KHz/1V	0.7000	0.52
VES-585245-121	120	K/M	1KHz/1V	0.9300	0.48
VES-585245-151	150	K/M	1KHz/1V	1.1000	0.40
VES-585245-181	180	K/M	1KHz/1V	1.3800	0.38
VES-585245-221	220	K/M	1KHz/1V	1.5700	0.35
VES-585245-271	270	K/M	1KHz/1V	1.8500	0.29
VES-585245-331	330	K/M	1KHz/1V	2.0000	0.28
VES-585245-391	390	K/M	1KHz/1V	2.6000	0.26
VES-585245-471	470	K/M	1KHz/1V	3.0000	0.12
VES-585245-561	560	K/M	1KHz/1V	4.1900	0.10
VES-585245-681	680	K/M	1KHz/1V	4.4400	0.08
VES-585245-821	820	K/M	1KHz/1V	5.1200	0.05

SMD Unshielded Power Inductors

◎ Detailed specifications and parameters are introduced

詳細規格及參數介紹

ORDERING CORE	Inductance (μH)	Tolerance ($\pm\%$)	Test Frequency	RDC (MAX) (Ω)	Isat (A)
VES-585245-102	1000	K/M	1KHz/1V	10.0000	0.03

SMD Unshielded Power Inductors

◎ Detailed specifications and parameters are introduced

詳細規格及參數介紹

ORDERING CORE	Inductance (μ H)	Tolerance (\pm %)	Test Frequency	RDC (MAX) (Ω)	Isat (A)
VES-787035-2R2	2.2	2.2	7.96MHz/1V	0.030	3.20
VES-787035-100	10	10	2.52MHz/1V	0.080	1.44
VES-787035-120	12	12	2.52MHz/1V	0.090	1.39
VES-787035-150	15	15	2.52MHz/1V	0.100	1.24
VES-787035-180	18	18	2.52MHz/1V	0.110	1.12
VES-787035-220	22	22	2.52MHz/1V	0.130	1.07
VES-787035-270	27	27	2.52MHz/1V	0.150	0.94
VES-787035-330	33	33	2.52MHz/1V	0.170	0.85
VES-787035-390	39	39	2.52MHz/1V	0.220	0.74
VES-787035-470	47	47	2.52MHz/1V	0.250	0.68
VES-787035-560	56	56	2.52MHz/1V	0.280	0.64
VES-787035-680	68	68	2.52MHz/1V	0.330	0.59
VES-787035-820	82	82	2.52MHz/1V	0.410	0.54
VES-787035-101	100	100	1KHz/1V	0.480	0.51
VES-787035-121	120	120	1KHz/1V	0.540	0.49
VES-787035-151	150	150	1KHz/1V	0.750	0.40
VES-787035-181	180	180	1KHz/1V	1.020	0.36
VES-787035-221	220	220	1KHz/1V	1.200	0.31
VES-787035-271	270	270	1KHz/1V	1.310	0.29
VES-787035-331	330	330	1KHz/1V	1.500	0.28
VES-787035-561	560	560	1KHz/1V	2.500	0.14

SMD Unshielded Power Inductors

© Detailed specifications and parameters are introduced

詳細規格及參數介紹

ORDERING CORE	Inductance (μ H)	Tolerance (\pm %)	Test Frequency	RDC (MAX) (Ω)	Isat (A)
VES-787050-1R4	1.4	M	7.96MHz/1V	0.020	3.70
VES-787050-1R5	1.5	M	7.96MHz/1V	0.020	3.70
VES-787050-1R8	1.8	M	7.96MHz/1V	0.020	3.70
VES-787050-2R2	2.2	M	7.96MHz/1V	0.020	3.70
VES-787050-2R7	2.7	M	7.96MHz/1V	0.020	3.70
VES-787050-3R0	3	M	7.96MHz/1V	0.025	3.70
VES-787050-3R3	3.3	M	7.96MHz/1V	0.030	3.70
VES-787050-3R9	3.9	M	7.96MHz/1V	0.030	3.70
VES-787050-4R7	4.7	K/M	7.96MHz/1V	0.040	3.50
VES-787050-5R6	5.6	M	7.96MHz/1V	0.040	3.30
VES-787050-6R8	6.8	M	7.96MHz/1V	0.040	3.10
VES-787050-8R2	8.2	M	7.96MHz/1V	0.050	2.70
VES-787050-100	10	K/M	2.52MHz/1V	0.070	2.30
VES-787050-120	12	M	2.52MHz/1V	0.080	2.00
VES-787050-150	15	K/M	2.52MHz/1V	0.090	1.80
VES-787050-180	18	M	2.52MHz/1V	0.100	1.60
VES-787050-220	22	K/M	2.52MHz/1V	0.110	1.50
VES-787050-270	27	M	2.52MHz/1V	0.120	1.30
VES-787050-330	33	K/M	2.52MHz/1V	0.130	1.20
VES-787050-390	39	K/M	2.52MHz/1V	0.160	1.10
VES-787050-470	47	K/M	2.52MHz/1V	0.180	1.10
VES-787050-560	56	K/M	2.52MHz/1V	0.240	0.94
VES-787050-680	68	K/M	2.52MHz/1V	0.280	0.85
VES-787050-820	82	K/M	2.52MHz/1V	0.370	0.78
VES-787050-101	100	K/M	1KHz/1V	0.430	0.72
VES-787050-121	120	K/M	1KHz/1V	0.470	0.66
VES-787050-151	150	K/M	1KHz/1V	0.640	0.58
VES-787050-181	180	K/M	1KHz/1V	0.710	0.51
VES-787050-221	220	K/M	1KHz/1V	0.960	0.49
VES-787050-271	270	K/M	1KHz/1V	1.110	0.42
VES-787050-331	330	K/M	1KHz/1V	1.260	0.40

SMD Unshielded Power Inductors

◎ Detailed specifications and parameters are introduced

詳細規格及參數介紹

ORDERING CORE	Inductance (μ H)	Tolerance (\pm %)	Test Frequency	RDC (MAX) (Ω)	Isat (A)
VES-787050-391	390	K/M	1KHz/1V	1.770	0.36
VES-787050-471	470	K/M	1KHz/1V	1.960	0.34
VES-787050-561	560	K/M	1KHz/1V	2.410	0.32

SMD Unshielded Power Inductors

© Detailed specifications and parameters are introduced

詳細規格及參數介紹

ORDERING CORE	Inductance (μ H)	Tolerance (\pm %)	Test Frequency	RDC (MAX) (Ω)	Isat (A)
VES-109040L-3R8	3.8	M	7.96MHz/1V	0.022	4.20
VES-109040L-100	10	M	2.52MHz/1V	0.050	2.38
VES-109040L-120	12	M	2.52MHz/1V	0.060	2.13
VES-109040L-150	15	K/M	2.52MHz/1V	0.070	1.87
VES-109040L-180	18	M	2.52MHz/1V	0.080	1.73
VES-109040L-220	22	K/M	2.52MHz/1V	0.090	1.60
VES-109040L-270	27	M	2.52MHz/1V	0.100	1.44
VES-109040L-330	33	K/M	2.52MHz/1V	0.120	1.26
VES-109040L-390	39	K/M	2.52MHz/1V	0.150	1.20
VES-109040L-470	47	K/M	2.52MHz/1V	0.170	1.10
VES-109040L-560	56	K/M	2.52MHz/1V	0.200	1.01
VES-109040L-680	68	K/M	2.52MHz/1V	0.220	0.91
VES-109040L-820	82	K/M	2.52MHz/1V	0.300	0.85
VES-109040L-101	100	K/M	1KHz/1V	0.340	0.74
VES-109040L-121	120	K/M	1KHz/1V	0.400	0.69
VES-109040L-151	150	K/M	1KHz/1V	0.540	0.61
VES-109040L-181	180	K/M	1KHz/1V	0.620	0.56
VES-109040L-221	220	K/M	1KHz/1V	0.720	0.53
VES-109040L-271	270	K/M	1KHz/1V	0.950	0.45
VES-109040L-331	330	K/M	1KHz/1V	1.100	0.42
VES-109040L-391	390	K/M	1KHz/1V	1.240	0.38
VES-109040L-471	470	K/M	1KHz/1V	1.530	0.35
VES-109040L-561	560	K/M	1KHz/1V	1.900	0.32

SMD Unshielded Power Inductors

© Detailed specifications and parameters are introduced

詳細規格及參數介紹

ORDERING CORE	Inductance (μ H)	Tolerance (\pm %)	Test Frequency	RDC (MAX) (Ω)	Isat (A)
VES-109054L-3R3	3.3	M	7.96MHz/1V	0.038	2.80
VES-109054L-4R7	4.7	M	7.96MHz/1V	0.040	2.60
VES-109054L-5R6	5.6	M	7.96MHz/1V	0.037	4.50
VES-109054L-6R8	6.8	M	7.96MHz/1V	0.037	4.33
VES-109054L-8R2	8.2	M	7.96MHz/1V	0.050	3.50
VES-109054L-100	10	K/M	2.52MHz/1V	0.060	2.60
VES-109054L-120	12	M	2.52MHz/1V	0.070	2.45
VES-109054L-150	15	K/M	2.52MHz/1V	0.080	2.27
VES-109054L-180	18	M	2.52MHz/1V	0.090	2.15
VES-109054L-220	22	K/M	2.52MHz/1V	0.100	1.95
VES-109054L-270	27	M	2.52MHz/1V	0.110	1.76
VES-109054L-330	33	K/M	2.52MHz/1V	0.120	1.50
VES-109054L-390	39	K/M	2.52MHz/1V	0.140	1.37
VES-109054L-470	47	K/M	2.52MHz/1V	0.170	1.28
VES-109054L-560	56	K/M	2.52MHz/1V	0.190	1.17
VES-109054L-680	68	K/M	2.52MHz/1V	0.220	1.11
VES-109054L-820	82	K/M	2.52MHz/1V	0.250	1.00
VES-109054L-101	100	K/M	1KHz/1V	0.350	0.97
VES-109054L-121	120	K/M	1KHz/1V	0.400	0.89
VES-109054L-151	150	K/M	1KHz/1V	0.470	0.78
VES-109054L-181	180	K/M	1KHz/1V	0.630	0.72
VES-109054L-221	220	K/M	1KHz/1V	0.730	0.66
VES-109054L-271	270	K/M	1KHz/1V	0.970	0.57
VES-109054L-331	330	K/M	1KHz/1V	1.150	0.52
VES-109054L-391	390	K/M	1KHz/1V	1.300	0.48
VES-109054L-471	470	K/M	1KHz/1V	1.480	0.42
VES-109054L-561	560	K/M	1KHz/1V	1.900	0.33
VES-109054L-681	680	K/M	1KHz/1V	2.250	0.28
VES-109054L-821	820	K/M	1KHz/1V	2.550	0.24
VES-109054L-102	1000	K/M	1KHz/1V	3.100	0.20

SMD Unshielded Power Inductors

◎ Detailed specifications and parameters are introduced

詳細規格及參數介紹

ORDERING CORE	Inductance (μ H)	Tolerance (\pm %)	Test Frequency	RDC (MAX) (Ω)	Isat (A)
VES-109065L-471	470	K/M	1KHz/1V	1.421	0.82
VES-109065L-102	1000	K/M	1KHz/1V	2.900	0.60
VES-109065L-122	1200	K/M	1KHz/1V	3.500	0.50
VES-109065L-202	2000	K/M	1KHz/1V	6.600	0.40
VES-109065L-602	6000	K/M	1KHz/1V	14.000	0.27
VES-109065L-822	8200	K/M	1KHz/1V	50.000	0.20

SMD Unshielded Power Inductors

◎ Detailed specifications and parameters are introduced

詳細規格及參數介紹

ORDERING CORE	Inductance (μ H)	Tolerance (\pm %)	Test Frequency	RDC (MAX) (Ω)	Isat (A)
VES-131370L-1R5	1.5	M	100KHz/0.1V	0.0050	9.5
VES-131370L-2R2	2.2	M	100KHz/0.1V	0.0060	9
VES-131370L-2R7	2.7	M	100KHz/0.1V	0.0080	8.2
VES-131370L-3R3	3.3	M	100KHz/0.1V	0.0087	7.5
VES-131370L-4R7	4.7	M	100KHz/0.1V	0.0100	7
VES-131370L-5R6	5.6	M	100KHz/0.1V	0.0150	6.5
VES-131370L-6R8	6.8	M	100KHz/0.1V	0.0170	6
VES-131370L-8R2	8.2	M	100KHz/0.1V	0.0190	5.8
VES-131370L-100	10	M	100KHz/0.1V	0.0210	5.6
VES-131370L-120	12	M	100KHz/0.1V	0.0300	4.8
VES-131370L-150	15	M	100KHz/0.1V	0.0340	4.5
VES-131370L-180	18	M	100KHz/0.1V	0.0360	4.2
VES-131370L-220	22	M	100KHz/0.1V	0.0470	3.6
VES-131370L-270	27	M	100KHz/0.1V	0.0600	3.3
VES-131370L-330	33	K/M	100KHz/0.1V	0.0650	3.1
VES-131370L-390	39	K/M	100KHz/0.1V	0.0750	2.9
VES-131370L-470	47	K/M	100KHz/0.1V	0.0820	2.7
VES-131370L-560	56	K/M	100KHz/0.1V	0.0950	2.5
VES-131370L-680	68	K/M	100KHz/0.1V	0.1200	2.3
VES-131370L-820	82	K/M	100KHz/0.1V	0.1400	2.1
VES-131370L-101	100	K/M	100KHz/0.1V	0.1800	1.9
VES-131370L-121	120	K/M	100KHz/0.1V	0.2100	1.8
VES-131370L-151	150	K/M	100KHz/0.1V	0.2500	1.6
VES-131370L-181	180	K/M	100KHz/0.1V	0.2800	1.5
VES-131370L-221	220	K/M	100KHz/0.1V	0.3600	1.3
VES-131370L-271	270	K/M	100KHz/0.1V	0.4100	1.2
VES-131370L-331	330	K/M	100KHz/0.1V	0.5200	1.1
VES-131370L-391	390	K/M	100KHz/0.1V	0.6000	1
VES-131370L-471	470	K/M	100KHz/0.1V	0.7200	0.9
VES-131370L-561	560	K/M	100KHz/0.1V	0.8800	0.85
VES-131370L-681	680	K/M	100KHz/0.1V	1.0000	0.8

SMD Unshielded Power Inductors

◎ Detailed specifications and parameters are introduced

詳細規格及參數介紹

ORDERING CORE	Inductance (μH)	Tolerance ($\pm\%$)	Test Frequency	RDC (MAX) (Ω)	Isat (A)
VES-131370L-821	820	K/M	100KHz/0.1V	1.3000	0.75
VES-131370L-102	1000	K/M	100KHz/0.1V	1.6000	0.65